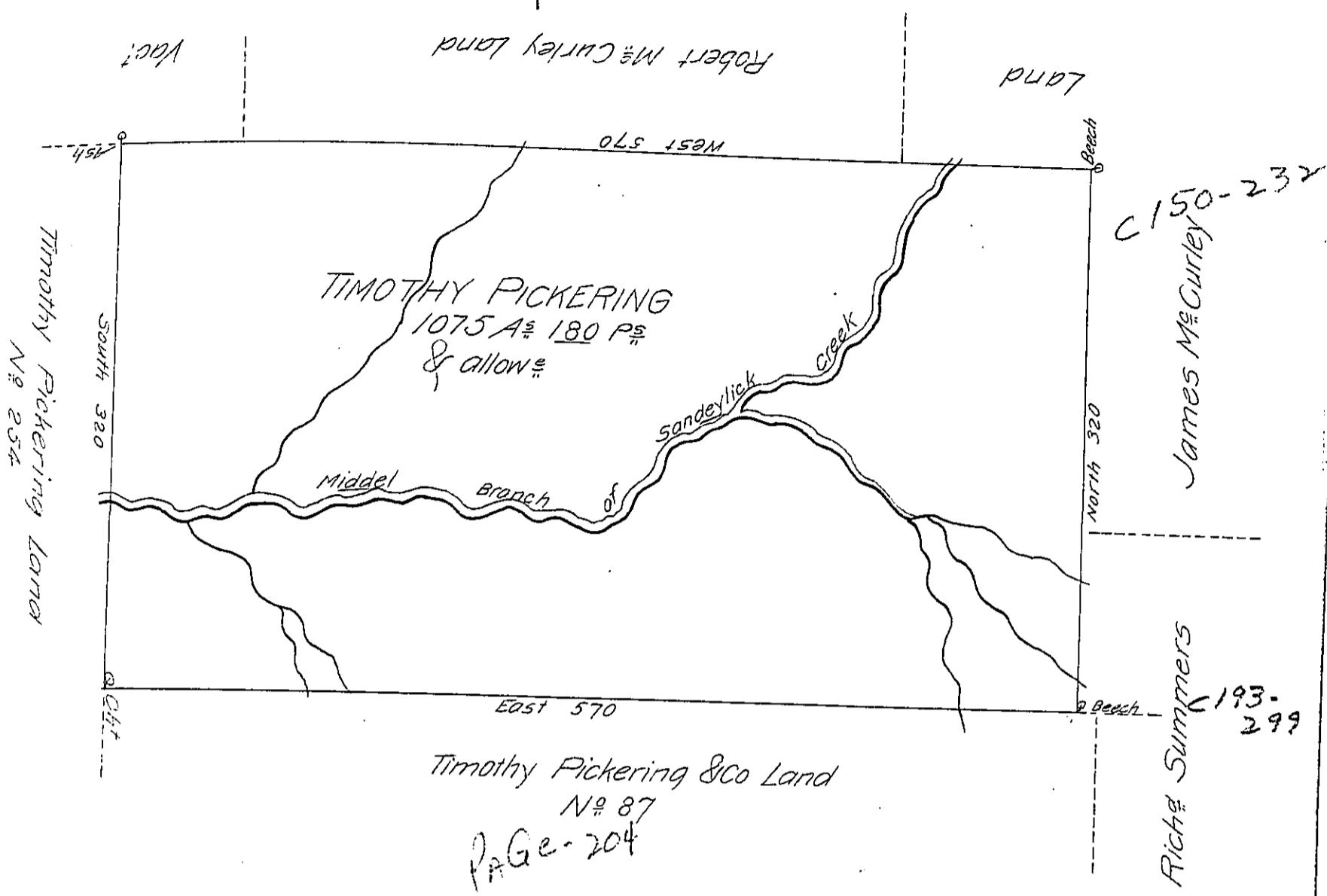


A-67



The Draught of a Tract of Land Called _____ Situate on the Middel branch of Sandeylick Creek in the late purches in district Number Six in the County of Northumberland Containing One Thousand and seventy five acres and one hundred and Eighty perches with the usual allowance of Six PCent for Roads. Surveyed on the 5th Day of November Anno Do: 1785 In persuance of a Warrant No 183 Granted to Timothy Pickering Samuel Hodgdon Duncan Ingraham Junr & Tench Coxe Dated at Phila the 17th Day of may Anno Dom 1785 for 1000 Acres.

To John Lukens Esq. S.G.

James Potter D.S.

IN TESTIMONY that the above is a copy of the original remaining on file in the Department of Internal Affairs of Pennsylvania, made conformably to an Act of Assembly approved the 16th day of February, 1833, I have hereunto set my Hand and caused the Seal of said Department to be affixed at Harrisburg, this twentyninth day of May 1906

Isaac D. Brown
 Secretary of Internal Affairs.